

DELTA BUILDING NUMBER ONE,
A CONDOMINIUM
AFN 200509285318



UTILITY PROVIDERS:

SANITARY SEWERS, STORM DRAINAGE AND WATER
CITY OF EVERETT
DEPARTMENT OF PUBLIC WORKS
3200 CEDAR STREET
EVERETT, WA 98201
425-257-8800
FAX: 425-257-8882

POWER
SNOHOMISH COUNTY PUD
1802 75TH STREET WEST
PO BOX 1107
EVERETT, WA 98206
425-347-4300

TELEPHONE
VERIZON
2312 WEST CASINO ROAD
EVERETT, WA 98204
425-356-4009

NATURAL GAS
PUGET SOUND ENERGY
355 110TH AVENUE NE
BELLEVUE, WA 98004
206-425-2000
888-225-5773

LEGEND

- AREA DRAIN
- ASPHALT (ASPH)
- BUILDING ENTRANCE
- BOLLARD (BLRD)
- BUILDING LINE
- BUILDING VEHICLE ACCESS
- CATCH BASIN (CB)
- CONCRETE SURFACE
- CONCRETE/EXTRUDED CURB/& GUTTER
- CONDUIT DROP
- CONCRETE/BRICK/ASPHALT WALK
- CONCRETE/BLOCK/WOOD RETAINING WALL
- CHAIN LINK FENCE (CLF)
- COLUMN
- CONCRETE/METAL/WOOD STAIRS
- CONIFEROUS TREE
- DECIDUOUS TREE
- CENTER OF CHANNEL
- DRIVEWAY
- ELECTRICAL CONDUIT
- ELECTRICAL DUCT
- ELECTRICAL HANDHOLE/JUNCTION BOX
- ELECTRICAL METER
- FOUND SURVEY MONUMENT (AS NOTED)
- FIRE HYDRANT
- FIRE DEPT. CONNECTION (FDC)
- FIBER OPTICS
- FINISH FLOOR ELEVATION
- GRADE BREAK
- GRAVEL SURFACE
- GUY ANCHOR
- GUY/POWER/UTILITY POLE
- INDUCTION LOOP (TRAFFIC)
- INLET (TYPE 250A)
- INLET (TYPE 250B)
- INVERT ELEVATION
- LIGHT POLE (METAL)
- LANDSCAPE/PLANTER
- MANHOLE
- MAILBOX (FEDERAL/PRIVATE)
- MONITOR WELL
- OVERHEAD POWER/CABLE/TELEPHONE
- PROPERTY LINE (PL)
- PAINTED UTILITY LOCATION
- PIPE FLOW DIRECTION
- CONCRETE/IRON/METAL/CLAY (PIPE TYPES)
- POLYETHYLENE PIPE (POLYMER PIPE TYPES)
- ROOF/PARAPET ELEVATION
- RECORD DATA
- ROCKERY
- SERVICE DRAIN (STORM)
- SDCO/SSCO
- SSS
- SANITARY SIDE SENER (RECORD)
- SIGN/STREET NAME SIGN
- TEMPORARY BENCHMARK (TBM)
- TRAFFIC FLOW DIRECTION
- TOE OF SLOPE
- TOP OF BANK
- WATER MAIN
- WATER METER
- WATER VALVE
- WATER GATE VALVE/CHAMBER
- VACATION/CONDEMNATION ORDINANCE
- WETLAND FLAG
- IRON FENCE (WIF)

BUSH, ROED & HITCHINGS, INC.
LAND SURVEYORS & CIVIL ENGINEERS
15400 SE 30TH PL, STE 100
BELLEVUE, Washington 98007
info@brhinc.com
(206) 323-4144
1-800-935-0508
WWW.BRHINC.COM



BOUNDARY AND TOPOGRAPHIC SURVEY
MACHINIST INSTITUTE GROUP
IAM 751
CITY OF EVERETT SNOHOMISH COUNTY WASHINGTON

drawn by	checked by
ABW	SAE
scale	date
1" = 20'	2/8/24
job no.	
2024012.00	
sheet	1 of 2

STATEMENT OF TOPOGRAPHIC MAP ELEMENTS (WAC 332-130-145)

2(b) PURPOSE: FEASIBILITY AND DESIGN
2(c) CONTOUR SOURCE: CONTOURS DERIVED FROM DIRECT FIELD OBSERVATIONS
2(f) CONTOUR ACCURACY: COMPLIES WITH UNITED STATES NATIONAL MAP ACCURACY STANDARDS (90% OR GREATER OF ALL SURVEY POINTS CHECKED ARE CORRECT WITHIN HALF OF ONE CONTOUR INTERVAL).

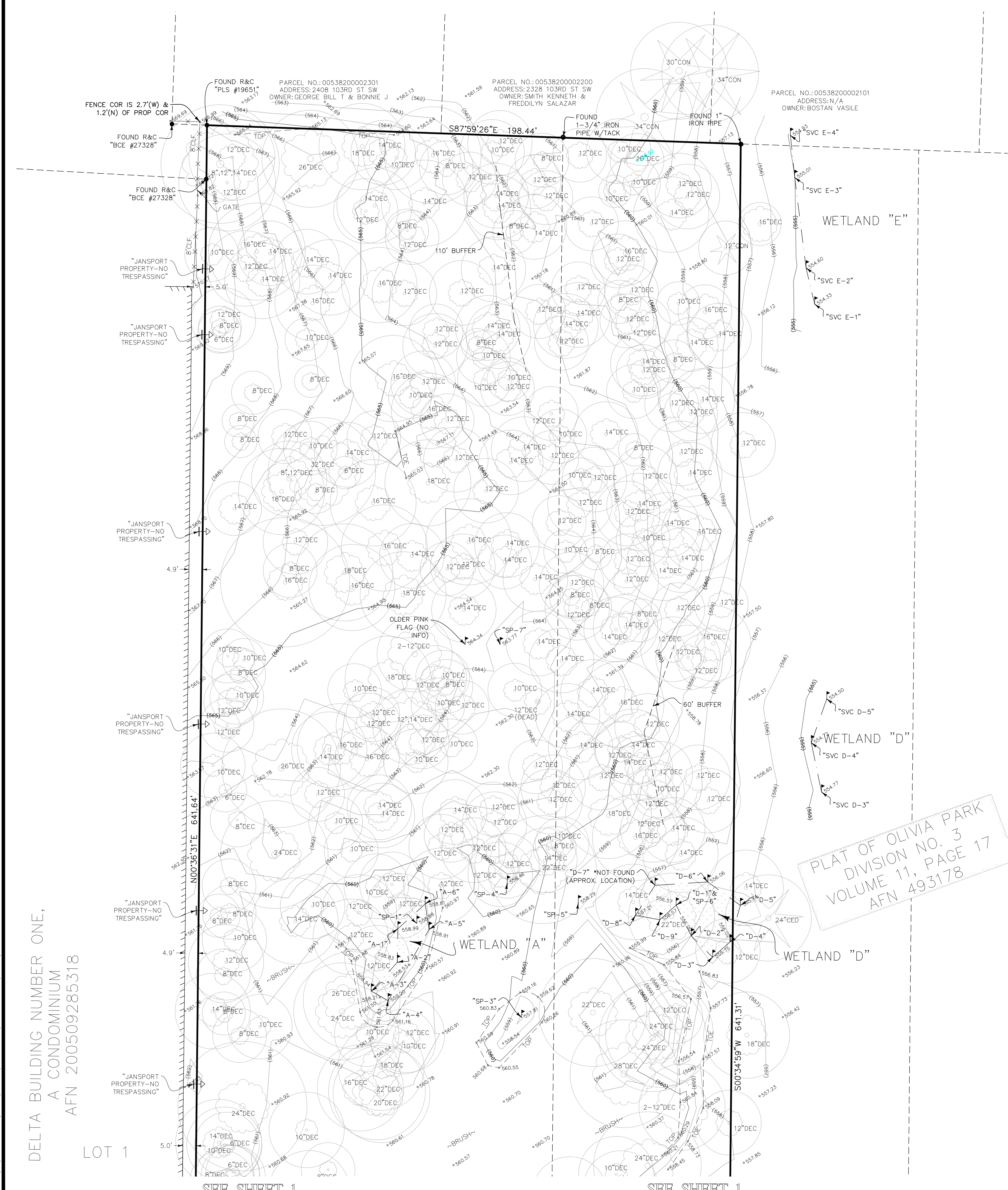


BUSH, ROED & HITCHINGS, INC.
LAND SURVEYORS & CIVIL ENGINEERS
15400 SE 30TH PL, STE 100
BELLEVUE, Washington 98007
info@brhinc.com



BOUNDARY AND TOPOGRAPHIC SURVEY
MACHINIST INSTITUTE GROUP
IAM 751
CITY OF EVERETT SNOHOMISH COUNTY WASHINGTON

Table with columns for scale (1" = 20'), date (2/8/24), and sheet number (2 of 2).



SITE NOTES

SITE ADDRESS: 2407 106TH STREET SW EVERETT, WA 98204
PARCEL NO.: 2804230020-1500 & 0053540000-1101
ZONING: L12 (LIGHT INDUSTRIAL)
ZONING AGENCY: CITY OF EVERETT
DEPARTMENT OF PLANNING AND COMMUNITY DEVELOPMENT

WETLAND NOTE:

WETLAND FLAGS WERE LOCATED WHERE FOUND IN JANUARY OF 2024.
SEE REPORT BY EASTSIDE ENVIRONMENTAL PROS., INC. DATED 01-27-2023, FOR FURTHER DETAILS.

TITLE REPORT SCHEDULE B EXCEPTIONS:

- 19. THE TERMS AND PROVISIONS CONTAINED IN THE DOCUMENT ENTITLED "DECLARATION OF COVENANTS"
20. THE TERMS AND PROVISIONS CONTAINED IN THE DOCUMENT ENTITLED "DECLARATION OF COVENANTS"
21. THE TERMS AND PROVISIONS CONTAINED IN THE DOCUMENT ENTITLED "RESTRICTIVE COVENANT/EQUITABLE SERVITUDE FOR MAINTENANCE OF DRAINAGE FACILITIES"

DATE OF PLAT OR MAP: 02/08/2024

Signature of Scott A. Edwards, P.L.S. No. 41024

THE ABOVE CERTIFICATE IS BASED UPON WORK PREPARED IN ACCORDANCE WITH GENERALLY ACCEPTED PROFESSIONAL SURVEY PRACTICE. WE MAKE NO OTHER WARRANTY, EITHER EXPRESSED OR IMPLIED.

ACCESS NOTES: SITE HAS DIRECT VEHICULAR AND PEDESTRIAN ACCESS TO 106TH STREET SOUTHWEST.
POSSIBLE ENCROACHMENT NOTES: NONE OBSERVED.

LEGAL DESCRIPTION NOTE: THE PROPERTIES SURVEYED ARE THE SAME AS SHOWN ON THE TITLE REPORT HEREON, AND IS A MATHEMATICALLY CLOSED FIGURE WITH NO GAPS, STRIPS OR GORES.

UTILITY MARKING NOTE: THE UNDERGROUND UTILITIES SHOWN HEREON ARE BASED ON RECORD (R) DOCUMENTS OBTAINED FROM PUBLIC AND PRIVATE UTILITY SOURCES, IF AVAILABLE. GROUND SURFACE PAINTED (P) UTILITY MARKINGS WERE TRACED ON THE GROUND AND PAINTED BY BUSH, ROED & HITCHINGS, INC. UNDERGROUND UTILITY LOCATING PERSONNEL.

PLAT OF OLIVIA PARK DIVISION NO. 3 VOLUME 11, PAGE 17 AFN 493178

DELTA BUILDING NUMBER ONE, A CONDOMINIUM AFN 200509285318

LOT 1

SEE SHEET 1

SEE SHEET 1

24"x36" 2/8/2024 U:\CSD\2024\2024012\SURVEYING\DWG\XS-SUR-00.DWG